

Sexual Dysfunction, Depression and Quality of Life in Patients With HIV Infection

Mahmood Amini Lari, MSc^{*}, Hosain Faramarzi, MD MPH^{*}, Mesbah Shams, MD^{**}
Maryam Marzban, MSc^{***}, Hasan Joulaei, MD^{****}

(Received: 2/9/2011; Revised: 3/11/2012; Accepted: 27/3/2013)

Objective: In Iran, psychological aspect of HIV infection is poorly understood. The purposes of this study were to evaluate sexual dysfunction, depression rate and health-related quality of life and evaluate the association between sexual dysfunction, depression and quality of life in a group of HIV⁺ subjects in Shiraz, Iran.

Methods: In this cross-sectional study, 278 male HIV-positive patients who had referred to voluntary counseling and testing and methadone maintenance therapy centers were recruited based on convenience sampling from May to October 2010. The purpose of the study was explained and interested individuals provided informed consent and completed validated questionnaires [Medical Outcomes Study Short Form-36 (SF-36), Brief Male Sexual Function Inventory (BMSFI), Beck Depression Inventory-short form(BDI)] to assess overall health related quality of life (HRQOL), sexual function, and depression.

Results: Average age of the participants was 34.9 ± 10.7 years and 37.5% were severely depressed. Ordinal logistic regression indicated that sexual drive (-0.15; CI: -0.28 to -0.027), ejaculation (-1.91, CI: -2.71 to -1.12), and problem assessment (-0.098, CI: -0.17 to -0.02) had significant effect on depression type. Depression was significantly correlated with poorer quality of life in all domains. Pearson's correlation coefficients between the BMSFI and the domains of SF-36 indicated that sexual drive ($r= 0.215$), ejaculation ($r= 0.297$) and problem assessment ($r= 0.213$) were significantly correlated with emotional wellbeing.

Conclusion: Sexual function and depression showed association with quality of life. Effective treatment of depression and sexual function may improve the quality of life of HIV-infected person.

Declaration of interest: None.

Citation: Amini Lari M, Faramarzi H, Shams M, Marzban M, Joulaei H. Sexual dysfunction, depression and quality of life in patients with HIV infection. *Iran J Psychiatry Behav Sci Behav Sci* 2013; 7(2): 70-7

Keywords: Depression • HIV • Quality of life • SF36 • Sexual function

Introduction

Sexual dysfunction has been widely reported among men living with HIV infection and also HIV uninfected men. Studies demonstrated that between 13% and 74% of HIV⁺ men in the highly active antiretroviral therapy suffering from sexual dysfunction (1). In Iran, although, persons with HIV infection usually suffer from sexual dysfunction, but its frequency and

manifestations in this population is not well known (2). Both organic and psychological factors have been identified as the causal factors for sexual dysfunction (3). Indeed, poor emotional and psychological functions among people living with HIV, may lead to sexual dysfunction (4). The psychological aspects of sexual dysfunction may take on an added dimension in patients with HIV infection. Regardless the mode of transmission, HIV-positive patients may be upset with the risk of transmitting HIV to others. So, psychological issues as a cause or an effect of sexual dysfunction should be considered by clinicians for better handling of HIV+ patients (3). Sexual dysfunctions moreover are conceptualized as one component of sexual health, which is an essential element of overall health related quality of life (HRQOL).

Authors' affiliations: ^{*}Shiraz HIV/AIDS Research Center, Shiraz University of Medical Sciences, Shiraz, Iran. ^{**}Namazi Hospital, endocrine & Metabolism research center, Shiraz University of Medical Sciences, Shiraz-Iran. ^{***}school of public health, Bushehr University Of Medical Sciences, Bushehr, Iran. ^{****} Health Policy Research Center Shiraz University of Medical Sciences, Shiraz, Iran.

•**Corresponding Author:** Maryam Marzban, PhD student in Epidemiology, School of Public Health, Bushehr University Of Medical Sciences, Bushehr, Iran.
Tel: +98 9178204991
Fax: 07714550134
Email: marzbanh@gmail.com

Sexual health encompasses the possibility of having pleasurable and safe sexual experiences (5).

Sexual dysfunction has been widely reported among men living with HIV infection and also HIV uninfected men. Studies demonstrated that between 13% and 74% of HIV+ men in the highly active antiretroviral therapy suffering from sexual dysfunction (1). In Iran, although, persons with HIV infection usually suffer from sexual dysfunction, but its frequency and manifestations in this population is not well known (2). Both organic and psychological factors have been identified as the causal factors for sexual dysfunction (3). Indeed, poor emotional and psychological functions among people living with HIV, may lead to sexual dysfunction (4). The psychological aspects of sexual dysfunction may take on an added dimension in patients with HIV infection. Regardless the mode of transmission, HIV-positive patients may be upset with the risk of transmitting HIV to others. So, psychological issues as a cause or an effect of sexual dysfunction should be considered by clinicians for better handling of HIV+ patients (3). Sexual dysfunctions moreover are conceptualized as one component of sexual health, which is an essential element of overall health related quality of life (HRQOL). Sexual health encompasses the possibility of having pleasurable and safe sexual experiences (5).

Depression

Not only physical manifestations, but psychological health is also negatively affected in individuals living with HIV/AIDS. The prevalence of depression in the HIV population remains high and should be continually addressed. Among individuals with HIV disease, major depression is a frequently observed psychiatric disorder. However, the relationships between HIV and depression are very complex and difficult to assess (6).

The symptoms of depression are similar in HIV-infected and non-infected patients, but patients with HIV infection may more frequently have sleep and appetite

disturbances. Patients with a history of depression, homosexual men, women, and intravenous drug abusers are among HIV-infected individuals who may be at increased risk for depression (7). As the number of persons living with HIV continues to grow, it is essential to explore the prevalence of HIV-related depression, as well as the factors that contribute to the depression. Some studies indicate a large range of prevalence rates of depression in HIV, with reports ranging from 5% to 45% (6-10).

Quality of life

Quality of life is an important component in the evaluation of the well-being of HIV-infected patients (11). Although medical aspects of HIV/AIDS are well documented, self-reported HRQOL measures are less well understood, particularly among those patients with advanced disease (12). HRQOL refers to how well a person functions and to his or her perceptions of well-being in the physical, mental, and social domains of life (13). Assessing HRQOL is useful for documenting the burden of chronic disease, following changes in health over time, and comparing the overall effects of treatments (14). Quality of life is an important component in the evaluation of patients well-being following HIV infection. Improving quality of life is a major goal in treating individuals infected with HIV. Measuring HRQOL is accepted as capturing the overall impacts of interventions on patients' functioning and wellbeing, which goes beyond the interpretability and clinical meaning of immunologic and virologic markers (15). Many studies have investigated HRQOL in patients with HIV (16-18), and some have assayed the association between HRQOL and depression (19). As Felton et al. have shown HRQOL is the single most important predictor of depression. Another study demonstrated that reduction in depression lead to a significant improvement in HRQOL with the exception of work and financial functioning (20).

To the best of our knowledge, no studies have reported depression rate, sexual dysfunction, and HRQOL of people living with HIV and their associations to each other

in Iran. This paper describes sexual dysfunction, depression and HRQOL and evaluates the impact of sexual dysfunction on depression and quality of life in a group of HIV-positive subjects in Shiraz, Iran.

Materials and Methods

Sample

From 315 participants a total of 278 HIV-positive patients were recruited based on convenience sampling from May to October 2010 with a response rate of over 88 percent. Data were collected from Voluntary Counseling and Testing Center (VCT) and MMT center, related to Shiraz University of Medical Sciences, Shiraz, Iran.

The purposes of the study were explained for all participants and interested individuals provided informed consent and completed a questionnaire detailing socio-demographic and HIV related variables and validated questionnaires to assess sexual function, depression and health related quality of life. This procedure was administered to the subjects when they came to the VCT and MMT centers, Shiraz, Iran.

Tools: SF-36

To assess HRQOL the Medical Outcomes Study Short Form-36 (SF-36) was used. This self-administered includes one multi-item scale that assesses eight health concepts: limitations in physical activities because of health problems (e.g., walking, dressing), limitations in social activities because of physical or emotional problems (e.g., meeting friends), limitations in usual role activities because of physical health problems, bodily pain (presence of pain and limitations due to pain), general mental health (psychological distress and well-being), limitations in usual role activities because of emotional problems, vitality (loss of energy or presence of fatigue), and general health perceptions (5). Each HRQOL domain is given a score ranging from 0 to 100, with higher scores indicative of better quality of life (21). In this study quality of life data were collected through computerized scoring software.

Brief Male Sexual Function Inventory (BMSFI)

To assess sexual dysfunction, the Brief Male Sexual Function Inventor (BMFSI) was used. This instrument consists of 11 questions with 5 possible responses scored on a scale of 0 (worst) to 4 (best). These questions are summarized into 5 domains, including sexual drive (questions 1 and 2), erectile function (questions 3 to 5), ejaculatory function (questions 6 and 7), problem assessment (questions 8 to 10) and overall sexual satisfaction (question 11). The value of each domain reflects the simple algebraic sum of the scores of the underlying question(s) with lower domain scores indicate more impaired sexual function (22).

Beck Depression Inventory-short form (BDI)

The Beck Depression Inventory II (BDI-II) was used to assess the prevalence and severity of depressive symptoms. The BDI-II has shown high validity and reliability in measuring depressive symptoms. Respondents were required to rate 21 items from 0 to 3 according to how they had felt during the previous 2 weeks. The BDI-II focuses on both the cognitive-affective symptoms of depression, such as pessimism and diminished self-esteem, and the somatic symptoms of depression such as weight loss (23). The questionnaires described above all have been validated in previous studies (23, 24).

Data Analysis

The data were analyzed using the Statistical Package for the Social Sciences (SPSS) for Windows, Version 18.0. We carried out a simple descriptive analysis of the patients' perception of their quality of life, sexual dysfunction and depression and demographic variables. The Pearson's correlation coefficients (r) and ordinal logistic regression were used for analysis.

Results

Study Participation and Participant Characteristics

A total of 278 patients were included in the study. All patients included in this study had received a diagnosis of HIV infection. Patient

characteristics are presented in table 1. The mean age was 37.4 (SD±7.4) years, all of them were male and 84.2% were unemployed.

Table 1. Characteristic of 278 HIV-seropositive patients in Shiraz, Iran

Characteristic	Frequency	Percentage
Age group (in year)		
25-30	25	9%
30-40	132	47.5%
41 and older	86	30.9%
Missing Data	35	12%
Marital statuses		
Single	119	42.8%
Married	94	33.8%
Separated	22	7.9%
Divorced	9	3.2%
Live with permanent partner	5	1.8%
Live with temporary partner	2	0.7%
Missing Data	27	9.7%
Employment status		
Un Employed	234	84.2%
Employed	44	15.8%
Level of education		
Illiterate	30	10.8%
Primary school and secondary school	123	44.2%
High school	57	20.5%
Higher than high school diploma	24	8.7%
Missing Data	44	15%
Cigarette smoking		
Yes	227	81.7%
No	43	15.5%
Missing Data	8	2%
Methadone maintenance therapy		
Yes	114	41%
No	162	58.3%
Missing Data	2	0.7%
Entering the AIDS stage		
Yes	188	67.6%
No	84	30.2%
Missing Data	6	0.2%

Mean, Standard deviation and score range for five domains of BMSFI are presented at table 2.

Among the 278 HIV-seropositive subjects enrolled, 211 (75.9%) patients were diagnosed to be depressed and 79(37.5%) were severely depressed. The prevalence of diagnosed depression among the population of 278 HIV-positive patients appears in figure 1.

Pattern of drug abuse and depression

One-hundred sixteen (42%) were receiving methadone at the time of study. Among non methadone users (162 cases) the illicit substances abused were heroin (49 cases, 30.2%), opium (19 cases, 11.5%), marijuana (3 cases, 2.1%), and a combination of

multiple illicit drugs (41 cases, 25%). Substances of abuse were not defined in 52 cases (31.2%). According to the univariate analysis, there was no significant association between depression and pattern of drug substance abuse (p=0.103). There was no statistically significant difference regarding depression rate between those who were receiving methadone and others (p= 0.142).

Table 2. Mean, standard deviation and score range for five domains of BMSFI among 237 HIV-seropositive patients

	Range	Mean (±SD)
Sexual drive	0- 8	3.7 (±1.92)
Ejaculation	0-12	6.36 (±2.7)
Erection	0 - 8	5.2 (±2.19)
Problem assessment	0-12	8.04 (±3.63)
Overall satisfaction	0- 4	2.42 (±1.05)

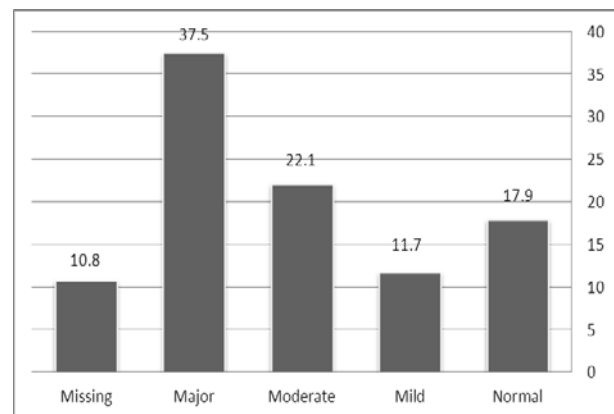


Figure 1. Severity of depression among 278 HIV-infected patients studied

Effect of sexual dysfunction on depression

Firstly, according to depression scores, we categorized the subjects into two groups. A BDI-II score of more than 18 was chosen as the cut-off point to distinguish patients with moderate to severe depression from those with normal or only minimally elevated depression scores.

Then, the association between five domains of the BMSFI and depression was investigated using binary logistic regression. The results indicated that sexual drive (OR= 0.84; CI: 0.71- 0.99) and problem assessment (OR=0.883; CI: 0.80-0.97) had significant effect on the presence of depression (Table 3).

Table 3. Effect of sexual dysfunction on depression among 273 HIV⁺ men

Sexual function	Odds Ratio	Confidence Interval	P-Value
Sexual drive	0.84	0.71 -0.99	0.038
Erection	0.91	0.80-1.03	0.142
Ejaculation	0.86	0.73-1.02	0.092
Problem assessment	0.883	0.80-0.97	0.011
Overall satisfaction	0.98	0.95-1.012	0.25

According to the results of evaluating sexual dysfunction, the mean and standard deviation of 8 health concepts of SF36 were as follow: limitations in physical activities because of health problems (e.g., walking, dressing) (32.6±25), limitations in social activities because of physical or emotional problems (e.g., meeting friends) (45.6±43.7), limitations in usual role activities because of physical health problems (55.11±55), bodily pain (presence of pain and limitations due to pain) (51,31±50), general mental health (psychological distress and well-being) (46.3±43.7), limitations in usual role activities because of emotional problems (42.5± 40.7), vitality (loss of energy or presence of fatigue)(43.08±45), and general health perceptions (48.3± 50).

Correlation of BMSFI with SF-36 scales

The Pearson's *r* correlation coefficients between the BMSFI and the domains of SF-36 in all 278 patients indicated that emotional well being was correlated with sexual drive ($r= 0.215$, $p= 0.006$), ejaculation ($r= 0.297$, $p< 0.0001$) and problem assessment ($r= 0.213$, $p= 0.004$). Likewise, significant associations were detected between general health and ejaculation ($r= 0.155$, $p= 0.046$) and between social functioning and problem assessment ($r= 0.192$, $p= 0.01$).

Correlation of depression with SF-36 scales

Table 4 shows the Pearson's *r* correlation coefficients between depression and the SF-36 composite subscales. There was statistical significance between all domains of the SF-36 and type of depressive disorder and emotional well being had the strongest correlation was observed with depression type ($r= 0.452$).

Table 4. The Pearson's *r* correlation coefficients between the type of depression and SF36 subscales among 278 HIV⁺ patients

	r	p
Physical functioning	0.386	< 0.0001
Role limitation due to physical health	0.285	< 0.0001
Pain	0.443	< 0.0001
General health	0.220	0.001
Energy/fatigue	0.413	< 0.0001
Social functioning	0.408	< 0.0001
Role limitation due to emotional problems	0.324	< 0.0001
Emotional well being	0.452	< 0.0001

Discussion

In Iran the epidemiology of sexual dysfunction in HIV/ADS patients and its relationship to quality of life and depression in this population are poorly understood. The purpose of our study was to determine the prevalence of depression and sexual dysfunction and to measure HRQOL and to evaluate the impact of sexual dysfunction on depression and quality of life in a group of HIV-positive subjects in Shiraz, Iran.

Sexual health is defined in terms of well-being, but is challenged by the social, cultural and economic realities faced by men with HIV (25). Sexual dysfunctions are considered as main part of sexual health, which is an essential element of overall HRQOL (5). Depressive disorders are common among 20% to 32% of people with HIV but often are not identified well (26). In our study most of the patients were depressed. In similar studies held in Denmark and Australia, symptoms of depression (i.e., BDI> 14) have been observed among most HIV-infected patients (23-27). The results of present study revealed that the rate of depression was higher in comparison to the mentioned studies. The findings approve that depression is less diagnosed and treated in HIV-infected patients. Sexual dysfunction is often implicated in depression and anxiety disorders and it is more common in depressed patients (28). Most patients suffering from mild, moderate, or major forms of depression experience sexual dysfunction simultaneously (29). For a long time, the sexual behavior of HIV-infected persons did not receive any serious attention (30). Our result showed that depressed patients significantly had lower scores in some domains of BMFSI and by increasing score of sexual drive and problem assessment the depression status become well.

Depression adversely affects QOL, and that effective treatment of depression may dramatically improve the QOL of HIV-infected persons (31), and it is related to most indices of quality of life among HIV-positive adults. Thus, in HIV-infected persons, a subject's experience of depressive symptoms is a good predictor of poor QOL. Depression adversely affects QOL, and that effective treatment of depression may dramatically improve the QOL of HIV-infected person (31).

Our study indicated that depression was significantly correlated with all domains of quality of life. In a Nigerian study, patients with a clinical diagnosis of depression had significantly lower HRQOL scores in all domains except 'social relationships (10). Some other studies demonstrated association between depression and quality of life among HIV+ patients (19, 20).

On the other hand sexual function has been recognized as a crucial component of health, in fact experience of sexual dysfunction is generally associated with poor quality of life (32). According to our findings about the relationships between some components of QOL and some domains of BMSFI, by improving sexual function HRQL can increased and this should be an important goal for clinicians involved in the care of HIV-infected individuals.

The present study is limited by its lack of conscious participants because of their poor socio- economical status such as low educational level, unemployment, poor social and family support and addiction and also the content of BMSFI, so data collection was so hard in this group and missing data is expected. These variables have not been taken into account though available literatures suggest that they influence quality of life significantly, sexual dysfunction and depression. Age, marital status and education that are significantly associated with quality of life, have also not been controlled in the present study. Due to the cross-sectional design, the findings point more toward an association rather than cause and effect. Various psychological symptoms are associated with HIV infection and associated

with quality of life, sexual dysfunction and depression; these factors are not taking into account in the present study too.

In conclusion we suggest future studies to evaluate our variables in female HIV-infected patients and comparison according to gender differences, also we offer administration randomized clinical trial to evaluate effect of endocrine treatment like testosterone therapy on sexual dysfunction for promoting health related quality of life in people who live with HIV.

Authors' Contributions

MAL designed the evaluation and drafted the manuscript. HF participated in clinical data collection. MSh performed the statistical analysis. MM re-evaluated the clinical data and HJ revised the manuscript. All authors read and approved the final manuscript.

Acknowledgments

We greatly appreciate the efforts of the patients who participated in the study, and our colleagues in VCT and MMT centers who supported our research. The work was funded by Shiraz HIV/AIDS Research Center affiliated to Shiraz University of Medical Sciences, Shiraz, Iran.

References

1. Guaraldi G, Luzi K, Murri R, Granata A, De Paola M, Orland G, et al. Sexual dysfunction in HIV-infected men: role of antiretroviral therapy, hypogonadism and lipodystrophy. *Antivir Ther* 2007; 12(7): 1059-65.
2. Amini Lari M, Parsa N, Marzban M, Shams M, Faramarzi H. Depression, testosterone concentration, sexual dysfunction and methadone use among men with hypogonadism and HIV infection. *AIDS Behav* 2012; 16(8): 2236-43.
3. Catalan J, Meadows J. Sexual dysfunction in gay and bisexual men with HIV infection: evaluation, treatment and implications. *AIDS Care* 2000; 12: 279-86.

4. Trotta MP, Ammassari A, Murri R, Monforte AD, Antinori A. Sexual dysfunction in HIV infection. *Lancet* 2007; 369(9565): 905–6.
5. Koole O, Noestlinger C, Colebunders R. Quality of life in HIV clinical trials: why sexual health must not be ignored. *Plos Clin Trials* 2007; 2(3): 8.
6. Fulk LJ, Kane BE, Phillips KD, Bopp CM, Hand GA. Depression in HIV-infected patients-Allopathic, complementary, and alternative treatments. *J Psychosom Res* 2004; 57(4):339-51.
7. Penzak SR, Reddy YS, Grimsley SR. Depression in patients with HIV infection. *Am J Health Syst Pharm* 2000; 57(4): 376-86.
8. Perkins DO, Stern RA, Golden RN, Murphy C, Naftolowitz D, Evans DL. Mood disorders in HIV infection: prevalence and risk factors in a nonp epicenter of the AIDS epidemic. *Am J Psychiatry* 1994; 151(2): 233-6.
9. McDaniel JS, Fowlie E, Summerville MB, Farber EW, Cohen-Cole SA. An assessment of rates of psychiatric morbidity and functioning in HIV disease. *Gen Hosp Psychiatry* 1995; 17(5): 346-52.
10. Adewuya AO, Afolabi MO, Ola BA, Ogundele OA, Ajibare AO, Oladipo BF, et al. Relationship between depression and quality of life in persons with HIV infection in Nigeria. *Int J Psychiatry Med* 2008; 38(1):43-51.
11. Rai Y, Dutta T, Gulati AK. Quality of Life of HIV-Infected People across different Stages of Infection. *J Happiness Stud* 2010; 11(1):61-9.
12. Anis AH, Nosyk B, Sun H, Guh DP, Bansback N, Li X, et al. Quality of life of patients with advanced HIV/AIDS: measuring the impact of both AIDS-defining events and non-AIDS serious adverse events. *J Acquir Immune Defic Syndr* 2009; 51(5):631-9.
13. Coons SJ, Rao S, Keininger DL, Hays RD. A comparative review of generic quality-of-life instruments. *Pharmacoeconomics* 2000; 17(1): 13-35.
14. Hammer SM, Eron Jr JJ, Reiss P, Schooley RT, Thompson MA, Walmsley S, et al. Antiretroviral treatment of adult HIV infection: 2008 recommendations of the International AIDS Society-USA panel. *JAMA* 2008; 300(5):555-70.
15. Wilson IB, Cleary PD. Linking clinical variables with health-related quality of life: a conceptual model of patient outcomes. *JAMA* 1995; 273(1): 59-65.
16. Campsmith ML, Nakashima AK, Davidson AJ. Self-reported health-related quality of life in persons with HIV infection: results from a multi-site interview project. *Health Qual Life Outcomes* 2003; 1: 12.
17. Friend-du Preez N, Peltzer K. HIV Symptoms and Health-Related Quality of Life Prior to Initiation of HAART in a Sample of HIV-Positive South Africans. *AIDS Behav* 2010; 14(6): 1437–47.
18. Pugh GL. Exploring HIV/AIDS Case Management and Client Quality of Life. *J HIV/AIDS Soc Serv* 2009; 8(2):202-18.
19. Gore-Felton C, Koopman C, Spiegel D, Vosvick M, Brondino M, Winningham A. Effects of quality of life and coping on depression among adults living with HIV/AIDS. *J Health Psychol* 2006; 11(5): 711- 29.
20. Elliott AJ, Russo J, Roy-Byrne PP. The effect of changes in depression on health related quality of life (HRQoL) in HIV infection. *Gen Hosp Psychiatry* 2002; 24(1): 43-7.
21. Posthouwer D, Plug I, van der Bom JG, Fischer K, Rosendaal FR, Mauser-Bunschoten EP. Hepatitis C and health-related quality of life among patients with hemophilia. *Haematologica* 2005; 90(6): 846-50.
22. Schrader S, Mills A, Schepelerle M, Block JE. Improvement in sexual functioning and satisfaction in nonresponders to testosterone gel: clinical effectiveness in hypogonadal, HIV-positive males. *Clin Cornerstone* 2005; 7(4): 26-31.
23. Rodkjaer L, Laursen T, Balle N, Sodemann M. Depression in patients with HIV is under-diagnosed: a cross-

- sectional study in Denmark. *HIV Med* 2010; 11(1):46-53.
24. Preau M, Leport C, Salmon-Ceron D, Carrieri P, Portier H, Chene G, et al. Health-related quality of life and patient-provider relationships in HIV-infected patients during the first three years after starting PI-containing antiretroviral treatment. *AIDS Care* 2004; 16(5): 649-61.
 25. Shapiro K, Ray S. Sexual health for people living with HIV. *Reprod Health Matters* 2007; 15(29):67-92.
 26. Valente SM. Depression and HIV disease. *J Assoc Nurse Aids Care* 2003; 14(2): 41-51.
 27. Gibbie T, Mijch A, Ellen S, Hoy J, Hutchison C, Wright E, et al. Depression and neurocognitive performance in individuals with HIV/AIDS: 2 year follow up. *HIV Med* 2006; 7(2): 112-21.
 28. McGahuey CA, Gelenberg AJ, Laukes CA, Moreno FA, Delgado PL, McKnight KM, et al. The Arizona sexual experience scale (ASEX): reliability and validity. *J Sex Marital Ther* 2000; 26(1): 25-40.
 29. Hartmann U. Depression and sexual dysfunction. *Psychiatr Prax.* 2007; 34(3): 14-7.
 30. Schiltz MA, Sandfort TG. HIV-positive people, risk and sexual behaviour. *Soc Sci Med* 2000; 50(11): 1571-88.
 31. Maldonado JR, Israelski D, Diamond S, Chapman A, Koopman C, Spiegel D. Predictors of quality of life in HIV-infected individuals: the effects of immunological status and depression. *J Psychosom Res* 2003; 55(2): 140.
 32. Luzzi K, Guaraldi G, Murri R, De Paola M, Orlando G, Squillace N, et al. Body image is a major determinant of sexual dysfunction in stable HIV-infected women. *Antivir Ther* 2009; 14(1): 85-92.